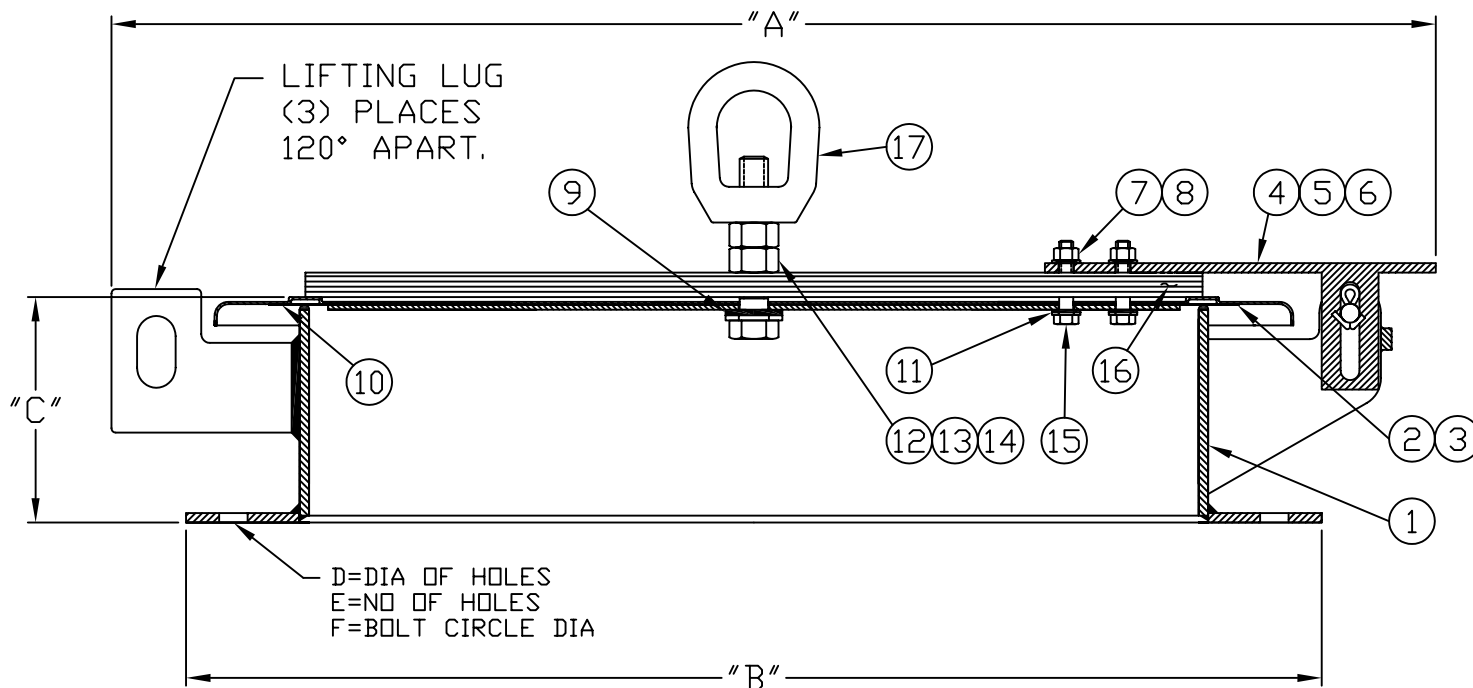


MODEL 2400A
EMERGENCY PRESSURE RELIEF VENT
STANDARD



SIZE	FLANGE DRILLING	A		B		C		D		E	F	
		In.	mm	In.	mm	In.	mm	In.	mm		In.	mm
16"	150# ANSI	26.50	673	23.50	597	6.13	156	1.13	29	16	21.25	540
20"	150# ANSI	30.50	775	27.50	699	6.13	156	1.25	32	20	25.00	635
	API 650	30.50	775	26.00	660	6.13	156	.75	19	16	23.50	597
24"	150# ANSI	34.50	876	32.00	813	6.13	156	1.38	35	20	29.50	749
	API 650	34.50	876	30.00	762	6.13	156	.75	19	20	27.50	699

NOTE:

1. WEIGHT PLATE(S) STACK HEIGHT VARIES WITH SET PRESSURE.
2. "C" DIMENSION MINIMUM HEIGHT, HEIGHT VARIES WITH WEIGHT PLATE(S) STACK HEIGHT.

TAGS AND SPECIFICATIONS

THIS DRAWING EMBODIES A CONFIDENTIAL PROPRIETARY DESIGN ORIGINATED BY GROTH CORPORATION, AND ALL DESIGN, MANUFACTURING, REPRODUCTION, USE AND SALE RIGHTS, REGARDING THE SAME ARE EXPRESSLY RESERVED. IT IS SUBMITTED UNDER A CONFIDENTIAL RELATIONSHIP FOR A SPECIFIED PURPOSE, AND THE RECIPIENT AGREES BY ACCEPTING THIS DRAWING NOT TO SUPPLY OR DISCLOSE ANY INFORMATION REGARDING IT TO ANY UNAUTHORIZED PERSONS OR TO INCORPORATE IN OTHER PROJECTS ANY SPECIAL FEATURES PECULIAR TO THIS DESIGN. ALL PATENTS RIGHTS HERETO ARE EXPRESSLY RESERVED BY GROTH CORPORATION, 1202 HAHLO, HOUSTON, TEXAS 77020

REV.	DATE	BY	ECN NO.
A	08-22-01	MP	10276
B	09-17-04	GS	10783



GROTH CORPORATION
a Continental Disc Company

APPROVED BY:	M.A.	CHECKED BY:	G.S.	DWG. NO.:	A-92086
DATE:	10-31-01	DATE:	10-31-01	DWN BY:	GS

MODEL 2400A

BILL OF MATERIAL

ITEM	DESCRIPTION	STANDARD MATERIALS OF CONSTRUCTION		OPTIONAL FEATURES
		CARBON STL <input type="checkbox"/>	316 SS <input type="checkbox"/>	<input type="checkbox"/>
1	BODY (1)	CS	316 SS	
2	PALLET	316 SS	316 SS	
3	PLATE, RETAINER	316 SS	316 SS	
4	ARM, HINGE	CS	SS	
5	PIN, HINGE	SS	SS	
6	PIN, COTTER	SS	SS	
7	NUT, HEX	SS	SS	
8	WASHER, LOCK	SS	SS	
9	* WASHER	PTFE	PTFE	
10	* DIAPHRAGM (2) (3)	Teflon® FEP	Teflon® FEP	
11	* WASHER	PTFE	PTFE	
12	NUT, HEX	SS	SS	
13	WASHER, LOCK	SS	SS	
14	BOLT, HEX (4)	SS	SS	
15	BOLT, HEX (4)	SS	SS	
16	** WEIGHT, PLATE	CS	CS	
17	** EYE NUT	CS	CS	

* SPARE PARTS

** IF REQUIRED (DETERMINED BY SETTING)

(1) SEAT MATERIAL ON CARBON STEEL BASE IS 316 SS WELD OVERLAY.

(2) ELASTOMERS ALSO AVAILABLE IN AFLAS, BUNA, EPDM & VITON.

(3) Teflon® is a registered trademark of E.I. du Pont de Nemours and Co. used under license.

(4) HEX BOLT LENGTH VARIES WITH SETTING.

DWG. NUMBER:
BOM NUMBER:

C-92086
92086BOM.XLS

Rev. B
Rev. B

