

- NOTES:
- SEE DWG C-92526 FOR ANSI, PN10/PN16 & JIS10K DRILLING PATTERNS.
 - DIMENSIONS IN INCHES [MM].

SIZE	"A"		"B"	
	IN	MM	IN	MM
10"	27.50	699	30.63	778

TAGS AND SPECIFICATIONS

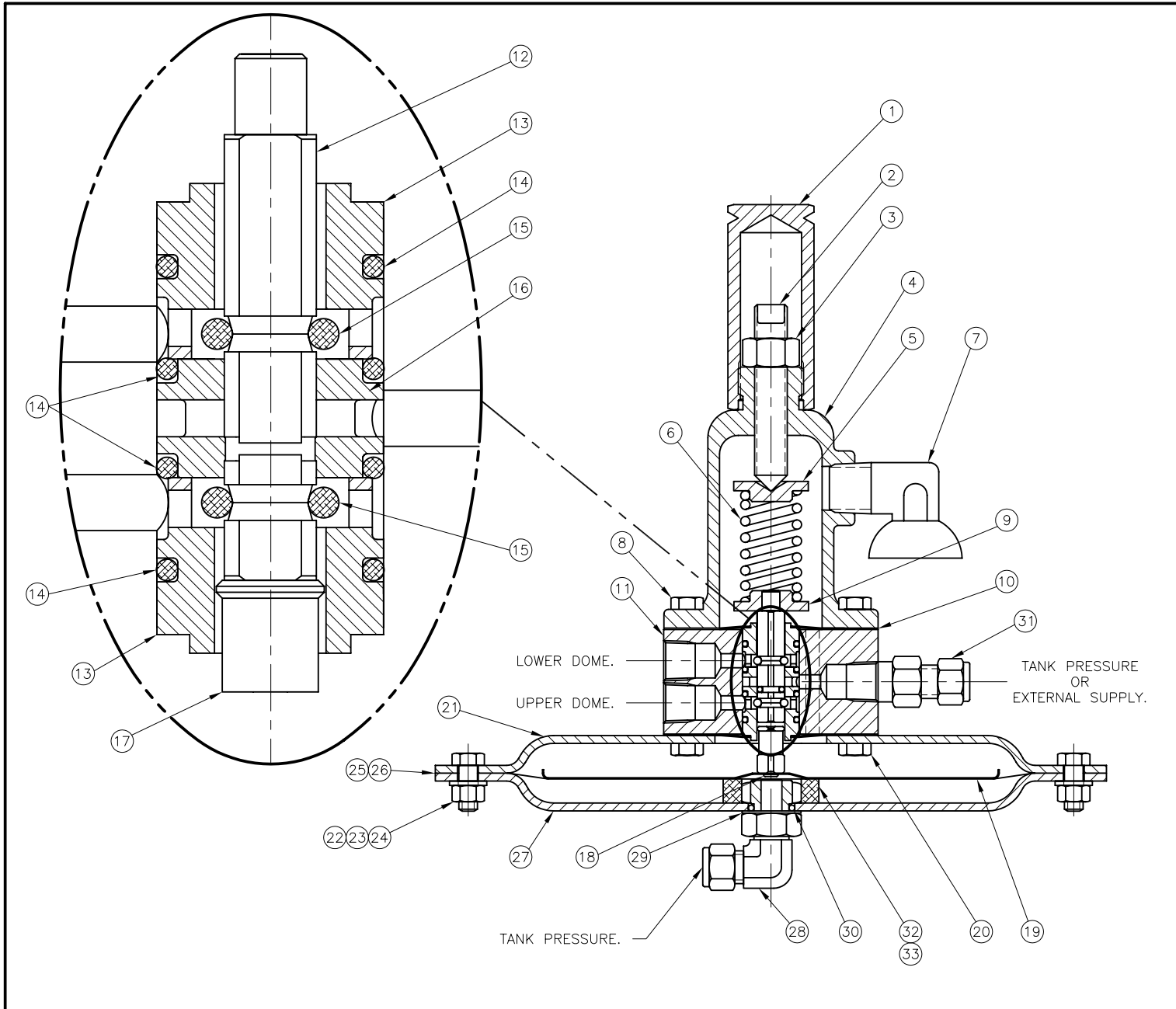
THIS DRAWING EMBODIES A CONFIDENTIAL PROPRIETARY DESIGN ORIGINATED BY GROTH CORPORATION, AND ALL DESIGN, MANUFACTURING, REPRODUCTION, USE AND SALE RIGHTS, REGARDING THE SAME ARE EXPRESSLY RESERVED. IT IS SUBMITTED UNDER A CONFIDENTIAL RELATIONSHIP FOR A SPECIFIC PURPOSE, AND THE RECIPIENT AGREES BY ACCEPTING THIS DRAWING NOT TO SUPPLY OR DISCLOSE ANY INFORMATION REGARDING IT TO ANY UNAUTHORIZED PERSONS OR TO INCORPORATE IN OTHER PROJECTS, ANY SPECIAL FEATURES PECULIAR TO THIS DESIGN. ALL PATENTS RIGHTS HERETO ARE EXPRESSLY RESERVED BY GROTH CORPORATION, 13650 N. PROMENADE, STAFFORD, TX. 77477

REV.	ECN#	APPR.	DATE


GROTH CORPORATION[®]
 a Continental Disc Company
 13650 N. Promenade Blvd.
 Stafford, Texas
 77477

TITLE MODEL 1430 POV W/1402 LOW SET PILOT			
C	DRAWING NO. 93151	SCALE NTS	SHEET 1 OF 1
	PREPARED BY J.E. LUJAN	04/02/03	
	CHECKED BY		
APPROVED BY			

DATE



TAGS AND SPECIFICATIONS

THIS DRAWING EMBODIES A CONFIDENTIAL PROPRIETARY DESIGN ORIGINATED BY GROTH CORPORATION, AND ALL DESIGN, MANUFACTURING, REPRODUCTION, USE AND SALE RIGHTS, REGARDING THE SAME ARE EXPRESSLY RESERVED. IT IS SUBMITTED UNDER A CONFIDENTIAL RELATIONSHIP FOR A SPECIFIC PURPOSE, AND THE RECIPIENT AGREES BY ACCEPTING THIS DRAWING NOT TO SUPPLY OR DISCLOSE ANY INFORMATION REGARDING IT TO ANY UNAUTHORIZED PERSONS OR TO INCORPORATE IN OTHER PROJECTS, ANY SPECIAL FEATURES PECULIAR TO THIS DESIGN. ALL PATENTS RIGHTS HERETO ARE EXPRESSLY RESERVED BY GROTH CORPORATION, 13650 N. PROMENADE, STAFFORD, TX. 77477

B	10851	GS	08/25/05	
A	10833	CFS	05/13/05	
REV.	ECN#	APPR.	DATE	


GROTH CORPORATION[®]
 a Continental Disc Company
 13650 N. Promenade Blvd.
 Stafford, Texas
 77477

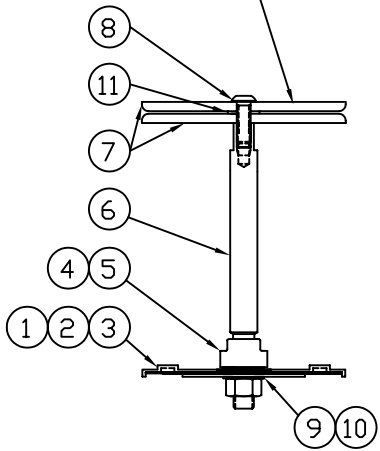
TITLE
MODEL 1402 PILOT VALVE.

C	DRAWING NO.	SCALE	SHEET
	91729	NTS	1 OF 1
	PREPARED BY	JASON LUJAN	11/11/99
CHECKED BY	CHUCK SPRAGUE	11/11/99	DATE
APPROVED BY	-	-	

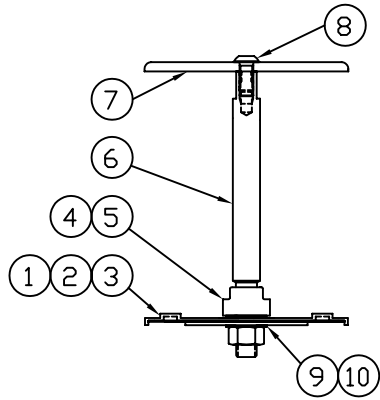
SECOND SUPPORT PLATE
AND TEFLON WASHER
SIT ON TOP OF ACT.
DIAPHRAGM.

DESCRIPTION

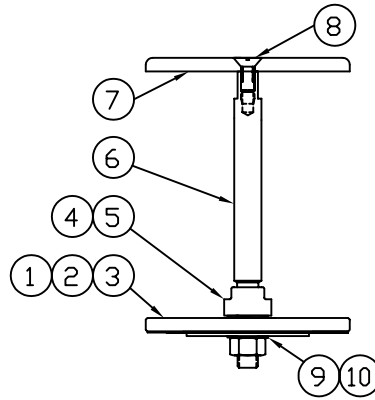
MODEL 1400/1500 SRS PILOT OPERATED VALVE
(PRESSURE/VACUUM)
PALLET ASSEMBLY-CONFIGURATION DETAILS



1402
(MICROSET FUNCTION)



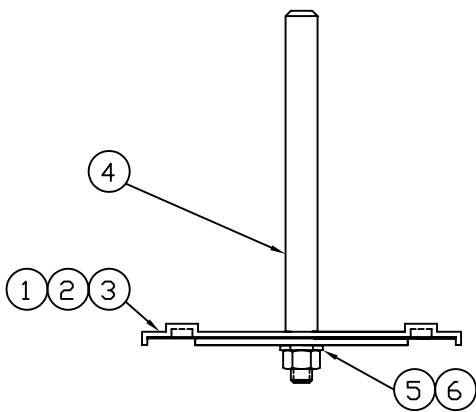
LOW SETTING
DETAIL



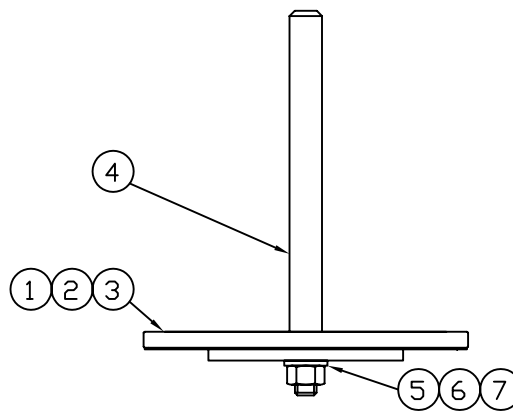
HIGH SETTING
DETAIL

MODEL	
_1400	_1500
_1420	_1520
_1430	_1530
_1460	_1560
PALLET ASSY	
_HIGH	_LOW

NOTE: PRESSURE SIDE PALLET ASSEMBLY.



LOW SETTING
DETAIL



HIGH SETTING
DETAIL

MODEL	
_1400	_1500
_1420	_1520
PALLET ASSY	
_HIGH	_LOW

NOTE: VACUUM SIDE PALLET ASSEMBLY.

TAGS AND SPECIFICATIONS

THIS DRAWING EMBODIES A CONFIDENTIAL PROPRIETARY DESIGN ORIGINATED BY GROTH CORPORATION, AND ALL DESIGN, MANUFACTURING, REPRODUCTION, USE AND SALE RIGHTS, REGARDING THE SAME ARE EXPRESSLY RESERVED. IT IS SUBMITTED UNDER A CONFIDENTIAL RELATIONSHIP FOR A SPECIFIED PURPOSE, AND THE RECIPIENT AGREES BY ACCEPTING THIS DRAWING NOT TO SUPPLY OR DISCLOSE ANY INFORMATION REGARDING IT TO ANY UNAUTHORIZED PERSONS OR TO INCORPORATE IN OTHER PROJECTS ANY SPECIAL FEATURES PECULIAR TO THIS DESIGN. ALL PATENTS RIGHTS HERETO ARE EXPRESSLY RESERVED BY GROTH CORPORATION, 1202 HAHLD, HOUSTON, TEXAS 77020

A	12-27-99	JEL	99097
B	08/10/01	MP	10266



GROTH CORPORATION
HOUSTON, TEXAS

CERTIFIED:

DWG. NO. : C-92144

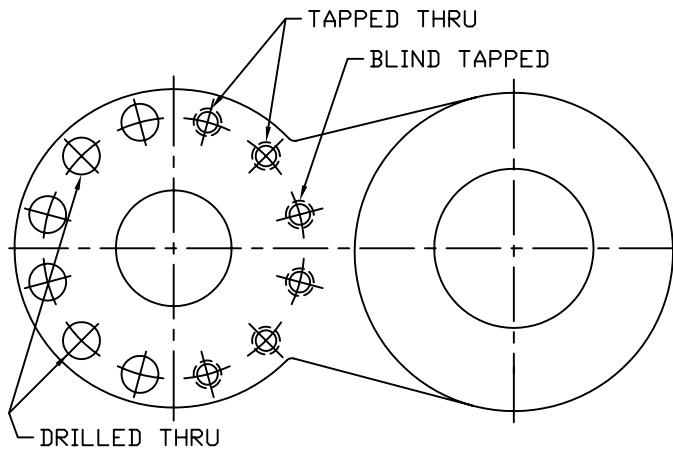
DATE:

DWN BY:

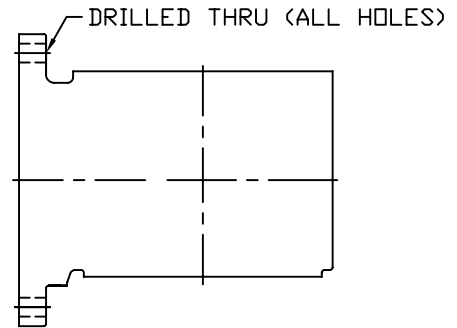
GS

REV. DATE BY DESCRIPTION

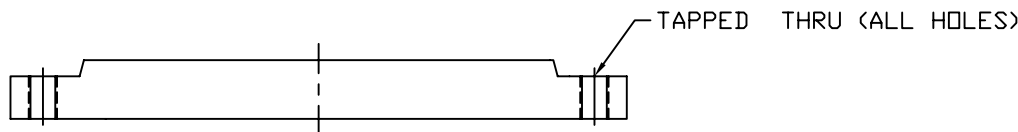
1200A SERIES
FLANGE DRILLING DIMENSION TABLES
(ANSI 150#, DIN PN10/16, JIS 10K)



INLET FLANGE
(VIEWED FROM BOTTOM)
MODELS: 1200A, 1220A, 1300A
1201B, 1221B, 1301A



OUTLET FLANGE
MODELS: 1220A, 1260A, 1360A
1221B, 1261A, 1361A



BODY
MODELS: 2300A & 2301A

DRILLED HOLES

SIZE	FLANGE DRILLING	HOLE DIA.		TAPPED HOLE	NO. OF HOLES	BOLT CIRCLE DIA.	
		in	mm			in	mm
2"	ANSI 150#	.75	19	5/8-11 UNC-2B	4	4.75	121
3"	ANSI 150#	.75	19	5/8-11 UNC-2B	4	6.00	152
4"	ANSI 150#	.75	19	5/8-11 UNC-2B	8	7.50	191
6"	ANSI 150#	.88	22	3/4-10 UNC-2B	8	9.50	241
8"	ANSI 150#	.88	22	3/4-10 UNC-2B	8	11.75	298
10"	ANSI 150#	1.00	25	7/8-9 UNC-2B	12	14.25	362
12"	ANSI 150#	1.00	25	7/8-9 UNC-2B	12	17.00	432
14"	ANSI 150#	1.13	29	1 -12 UNC-2B	12	18.75	476

SIZE	FLANGE DRILLING	HOLE DIA.		TAPPED HOLE	NO. OF HOLES	BOLT CIRCLE DIA.	
		in	mm			in	mm
2"	JIS 10K	.75	19	M16 x 2.0-6H	4	4.72	120
3"	JIS 10K	.75	19	M16 x 2.0-6H	8	5.91	150
4"	JIS 10K	.75	19	M16 x 2.0-6H	8	6.89	175
6"	JIS 10K	.91	23	M20 x 2.5-6H	8	9.45	240
8"	JIS 10K	.91	23	M20 x 2.5-6H	12	11.42	290
10"	JIS 10K	.98	25	M22 x 2.5-6H	12	13.98	355
12"	JIS 10K	.98	25	M22 x 2.5-6H	16	15.75	400
14"	JIS 10K	.98	25	M22 x 2.5-6H	16	17.52	445

SIZE	FLANGE DRILLING	HOLE DIA.		TAPPED HOLE	NO. OF HOLES	BOLT CIRCLE DIA.	
		in	mm			in	mm
2"	PN 10	.71	18	M16 x 2.0-6H	4	4.92	125
3"	PN 10	.71	18	M16 x 2.0-6H	8	6.30	160
4"	PN 10	.71	18	M16 x 2.0-6H	8	7.09	180
6"	PN 10	.87	22	M20 x 2.5-6H	8	9.45	240
8"	PN 10	.87	22	M20 x 2.5-6H	8	11.61	295
10"	PN 10	.87	22	M20 x 2.5-6H	12	13.78	350
12"	PN 10	.87	22	M20 x 2.5-6H	12	15.75	400
14"	PN 10	.87	22	M20 x 2.5-6H	16	18.11	460

SIZE	FLANGE DRILLING	HOLE DIA.		TAPPED HOLE	NO. OF HOLES	BOLT CIRCLE DIA.	
		in	mm			in	mm
2"	PN 16	.71	18	M16 x 2.0-6H	4	4.92	125
3"	PN 16	.71	18	M16 x 2.0-6H	8	6.30	160
4"	PN 16	.71	18	M16 x 2.0-6H	8	7.09	180
6"	PN 16	.87	22	M20 x 2.5-6H	8	9.45	240
8"	PN 16	.87	22	M20 x 2.5-6H	12	11.61	295
10"	PN 16	1.02	26	M24 x 3.0-6H	12	13.98	355
12"	PN 16	1.02	26	M24 x 3.0-6H	12	16.14	410
14"	PN 16	1.02	26	M24 x 3.0-6H	16	18.50	470

THIS DRAWING EMBODIES A CONFIDENTIAL PROPRIETARY DESIGN ORIGINATED BY GROTH CORPORATION, AND ALL DESIGN, MANUFACTURING, REPRODUCTION, USE AND SALE RIGHTS, REGARDING THE SAME ARE EXPRESSLY RESERVED. IT IS SUBMITTED UNDER A CONFIDENTIAL RELATIONSHIP FOR A SPECIFIED PURPOSE, AND THE RECIPIENT AGREES BY ACCEPTING THIS DRAWING NOT TO SUPPLY OR DISCLOSE ANY INFORMATION REGARDING IT TO ANY UNAUTHORIZED PERSONS OR TO INCORPORATE IN OTHER PROJECTS ANY SPECIAL FEATURES PECULIAR TO THIS DESIGN. ALL PATENTS RIGHTS HERETO ARE EXPRESSLY RESERVED BY GROTH CORPORATION, 1202 HAHLO, HOUSTON, TEXAS 77020

REV.	DATE	BY	ECN NO.
A	08-22-01	ESQ	10276



GROTH CORPORATION
a Continental Disc Company

APPROVED BY:	CHECKED BY:	DWG. NO. : C-92526
DATE:	DATE:	DWN BY: ES QUINTERO

**MODEL 1430 POV
w/1402 LOW-SET PILOT**

**GROTH CORPORATION
STAFFORD, TX- USA
BILL OF MATERIAL**

ITEM	DESCRIPTION	STANDARD MATERIALS OF CONSTRUCTION (1)			OPTIONAL FEATURES (2)
		ALUMINUM <input type="checkbox"/>	CARBON STL <input type="checkbox"/>	316 SS <input type="checkbox"/>	<input type="checkbox"/>
1	INLET	ALUM	CS	316 SS	
2	WEATHERHOOD POST	SS	SS	SS	
3	HEX NUT	316 SS	316 SS	316 SS	
4	LOCK WASHER	316 SS	316 SS	316 SS	
5	WEATHERHOOD	ALUM	CS	316 SS	
6	SCREEN	316 SS	316 SS	316 SS	
7	HEX NUT	316 SS	316 SS	316 SS	
8	LOCK WASHER	316 SS	316 SS	316 SS	
9	LOWER ACTUATOR HOUSING	CS	CS	316 SS	
10	* GASKET-ACTUATOR (5)	TEFLON® FEP	TEFLON® FEP	TEFLON® FEP	
11	* DIAPHRAGM-ACTUATOR (5)	TEFLON® FEP	TEFLON® FEP	TEFLON® FEP	
12	LIFTING EYE	316 SS	316 SS	316 SS	
13	HEX BOLT	316 SS	316 SS	316 SS	
14	FLAT WASHER	316 SS	316 SS	316 SS	
15	LOCK WASHER	316 SS	316 SS	316 SS	
16	HEX NUT	316 SS	316 SS	316 SS	
17	TUBING	316 SS	316 SS	316 SS	
18	UNION	316 SS	316 SS	316 SS	
19	MALE CONNECTOR	316 SS	316 SS	316 SS	
20	UPPER ACTUATOR HOUSING	CS	CS	316 SS	
21	MALE CONNECTOR	316 SS	316 SS	316 SS	
22	BRACKET, SUPPORT	316 SS	316 SS	316 SS	
23	MALE CONNECTOR	316 SS	316 SS	316 SS	
24	SET SCREW	SS	SS	SS	
25	HEX JAM NUT	SS	SS	SS	
26	WASHER-STEM GUIDE	303 SS	303 SS	316 SS	
27	STEM GUIDE	CS	CS	316 SS	
28	* BUSHING-STEM GUIDE	TEFLON	TEFLON	TEFLON	
29	* O-RING- STEM GUIDE (4)	VITON	VITON	VITON	
30	SEAT RING (3)	ALUM	316 SS	316 SS	

* SPARE PARTS

(1) CHECK BOX FOR MATERIAL SELECTION.

(2) COMPLETE OPTIONAL FEATURES BOX WHEN APPLICABLE.

(3) ALUM UNITS - 316 SS BONDED SEAT (OPTIONAL).

CS & 316 SS UNITS - WELDED 316 SS INSERT.

(4) ALSO AVAILABLE IN AFLAS, BUNA-N, EPR & KALREZ.

(5) Teflon® is a registered trademark of E.I. du Pont de Nemours and Co. used under license.

DWG. NUMBER:

C-93151

REV.

BOM NUMBER:

93151bom.xls

REV.



a Continental Disc Company