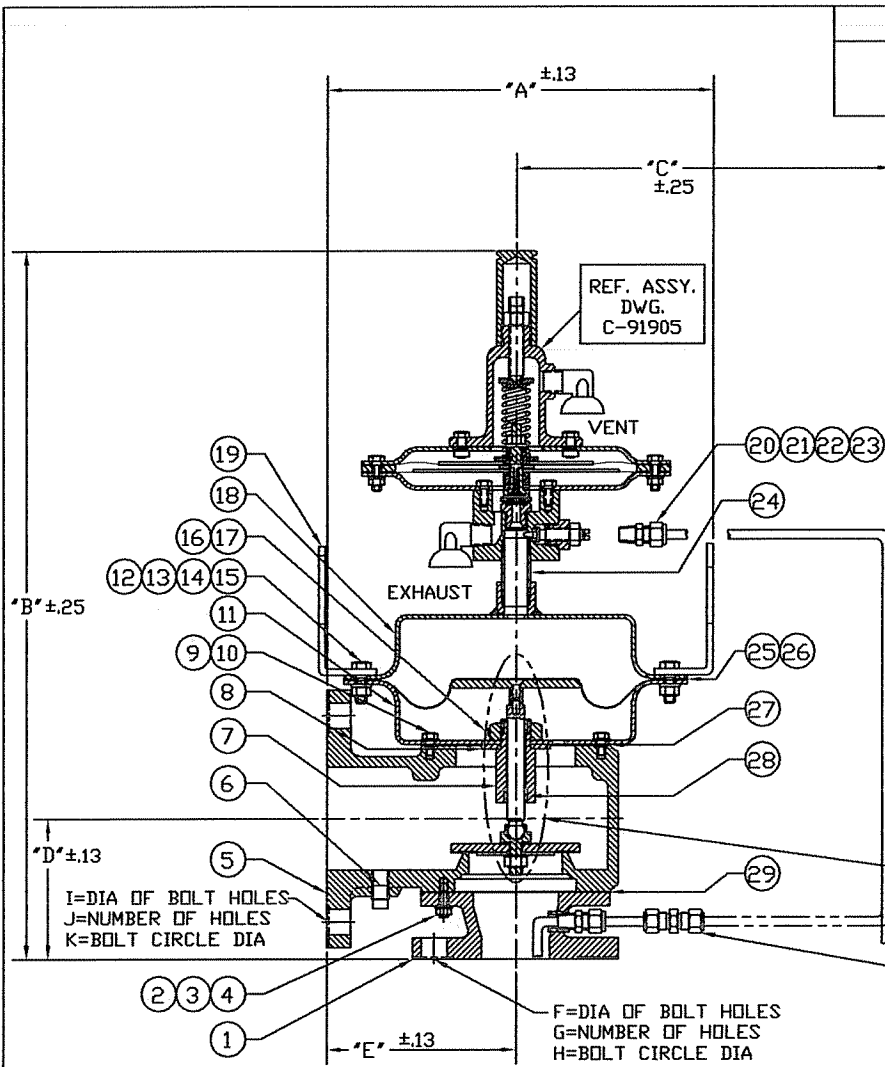


DESCRIPTION

MODEL 1460  
PILOT OPERATED VALVE  
PRESSURE RELIEF



- DIAPHRAGM SEAL WITH STANDARD SEAT (PLATE PALLET)
- DIAPHRAGM SEAL WITH STANDARD SEAT (SPUN PALLET)
- DIAPHRAGM SEAL WITH SEAT RING
- O-RING SEAL WITH SEAT RING

SEAT CONFIGURATION'S VARY WITH SETTING AND MATERIAL REQUIREMENT'S

- ACCESSORIES
- FIELD TEST CONN.
  - MANUAL BLOWDOWN
  - REMOTE BLOWDOWN
  - REMOTE SENSE
  - PILOT EXHAUST PIPED TO DISCHARGE HEADER.
  - BACK-FLOW PREVENTOR
  - PILOT SUPPLY FILTER
  - NO OPTIONS
- CHECK WHEN APPLICABLE.

"REF." DWG. C-92144 FOR PRESSURE PALLET ASSY. COMPONENTS

SENSE LINE CONNECTION ON BODY OR REMOTE PICK-UP. (CUSTOMER OPTION)  
THIS SECTION ROTATED FROM TRUE POSITION

SIZE	A		B		C		D		E		F		G		H		I		J		K	
	in.	mm	in.	mm	in.	mm	in.	mm	in.	mm	in.	mm	qty.	in.	mm	in.	mm	qty.	in.	mm		
2"	11.50	292	23.25	591	13.00	330	4.13	105	5.50	140	.75	19	4	4.75	121	.75	19	4	6.00	152		
3"	12.50	318	25.38	645	13.50	343	5.00	127	6.00	152	.75	19	4	6.00	152	.75	19	8	7.50	191		
4"	13.38	340	28.25	718	13.88	353	6.50	165	6.50	165	.75	19	8	7.50	191	.88	22	8	9.50	241		
6"	17.75	451	33.75	857	15.50	394	8.50	216	8.50	216	.88	22	8	9.50	241	.88	22	8	11.75	298		
8"	21.50	546	37.38	949	17.75	451	9.75	248	10.75	273	.88	22	8	11.75	298	1.00	25	12	14.25	362		
10"	25.25	641	39.38	1000	19.75	502	10.25	260	12.50	318	1.00	25	12	14.25	362	1.00	25	12	17.00	432		
12"	28.75	730	43.00	1092	20.75	527	11.00	279	15.00	381	1.00	25	12	17.00	432	1.13	29	12	18.75	476		

NOTE:  
STANDARD 150 LB. ANSI FLANGE DRILLING.

THIS DRAWING EMBODIES A CONFIDENTIAL PROPRIETARY DESIGN ORIGINATED BY GROTH CORPORATION, AND ALL DESIGN, MANUFACTURING, REPRODUCTION, USE AND SALE RIGHTS, REGARDING THE SAME ARE EXPRESSLY RESERVED. IT IS SUBMITTED UNDER A CONFIDENTIAL RELATIONSHIP FOR A SPECIFIED PURPOSE, AND THE RECIPIENT AGREES BY ACCEPTING THIS DRAWING NOT TO SUPPLY OR DISCLOSE ANY INFORMATION REGARDING IT TO ANY UNAUTHORIZED PERSONS OR TO INCORPORATE IN OTHER PROJECTS ANY SPECIAL FEATURES PECULIAR TO THIS DESIGN. ALL PATENTS RIGHTS HERETO ARE EXPRESSLY RESERVED BY GROTH CORPORATION, 1202 HAHLD, HOUSTON, TEXAS 77020

A	12-27-99	JEL	99097
REV.	DATE	BY	DESCRIPTION



GROTH CORPORATION  
HOUSTON, TEXAS

CERTIFIED:	DWG. NO. : C-92003
DATE:	DWN BY: ES QUINTERO

ITEM	DESCRIPTION	STANDARD MATERIALS OF CONSTRUCTION			OPTIONAL FEATURES
		ALUMINUM <input type="checkbox"/>	CARBON STL <input type="checkbox"/>	316 SS <input type="checkbox"/>	
1	INLET	AL (356 T6)	CS (WCB)	316 SS (CF-8M)	
2	STUD	316 SS	316 SS	SS	
3	NUT, HEX	316 SS	316 SS	SS	
4	WASHER, LOCK	316 SS	316 SS	SS	
5	PLUG, PIPE	316 SS	316 SS	316 SS	
6	OUTLET	AL (356 T6)	CS (WCB)	316 SS (CF-8M)	
7	WASHER, LOCK	316 SS	316 SS	316 SS	
8	BOLT, HEX	316 SS	316 SS	316 SS	
9	HOUSING, LOWER ACTUATOR	316 SS	316 SS	316 SS	
10	NUT, HEX	316 SS	316 SS	316 SS	
11	WASHER, LOCK	316 SS	316 SS	316 SS	
12	WASHER, FLAT	316 SS	316 SS	316 SS	
13	BOLT, HEX	316 SS	316 SS	316 SS	
14	HOUSING, UPPER ACTUATOR	316 SS	316 SS	316 SS	
15	LUG, LIFTING	316 SS	316 SS	316 SS	
16	FITTING, MALE CONNECTOR	316 SS	316 SS	316 SS	
17	FITTING, UNION	316 SS	316 SS	316 SS	
18	TUBING, 3/8" OD X .035 WALL	316 SS	316 SS	316 SS	
19	FITTING, MALE CONNECTOR	316 SS	316 SS	316 SS	
20	PILOT (REF. DWG. C-91905)	316 SS	316 SS	316 SS	
21	NIPPLE, PIPE	316 SS	316 SS	316 SS	
22	* GASKET, ACTUATOR	FEP	FEP	FEP	
23	* DIAPHRAGM, ACTUATOR	PFA	PFA	PFA	
24	* GASKET	FEP	FEP	FEP	
25	* GASKET	FEP	FEP	FEP	
26	CROSS, PIPE	316 SS	316 SS	316 SS	
27	PLUG, PIPE	316 SS	316 SS	316 SS	
28	* INSERT, SEAT (NOT SHOWN) (1)	316 SS	316 SS	N/A	
29	FILTER 1420 (OPTIONAL)	316 SS	316 SS	316 SS	
30	BRACKET, FILTER (OPTIONAL)	316 SS	316 SS	316 SS	
31	U-BOLT (OPTIONAL)	316 SS	316 SS	316 SS	

\* SPARE PARTS

(1) STANDARD - BONDED ON ALUMINUM UNITS, WELDED ON CS UNITS.

DWG. NUMBER:  
BOM NUMBER:

92003-1  
92003-1BOM.xls

REV. D  
REV. E

