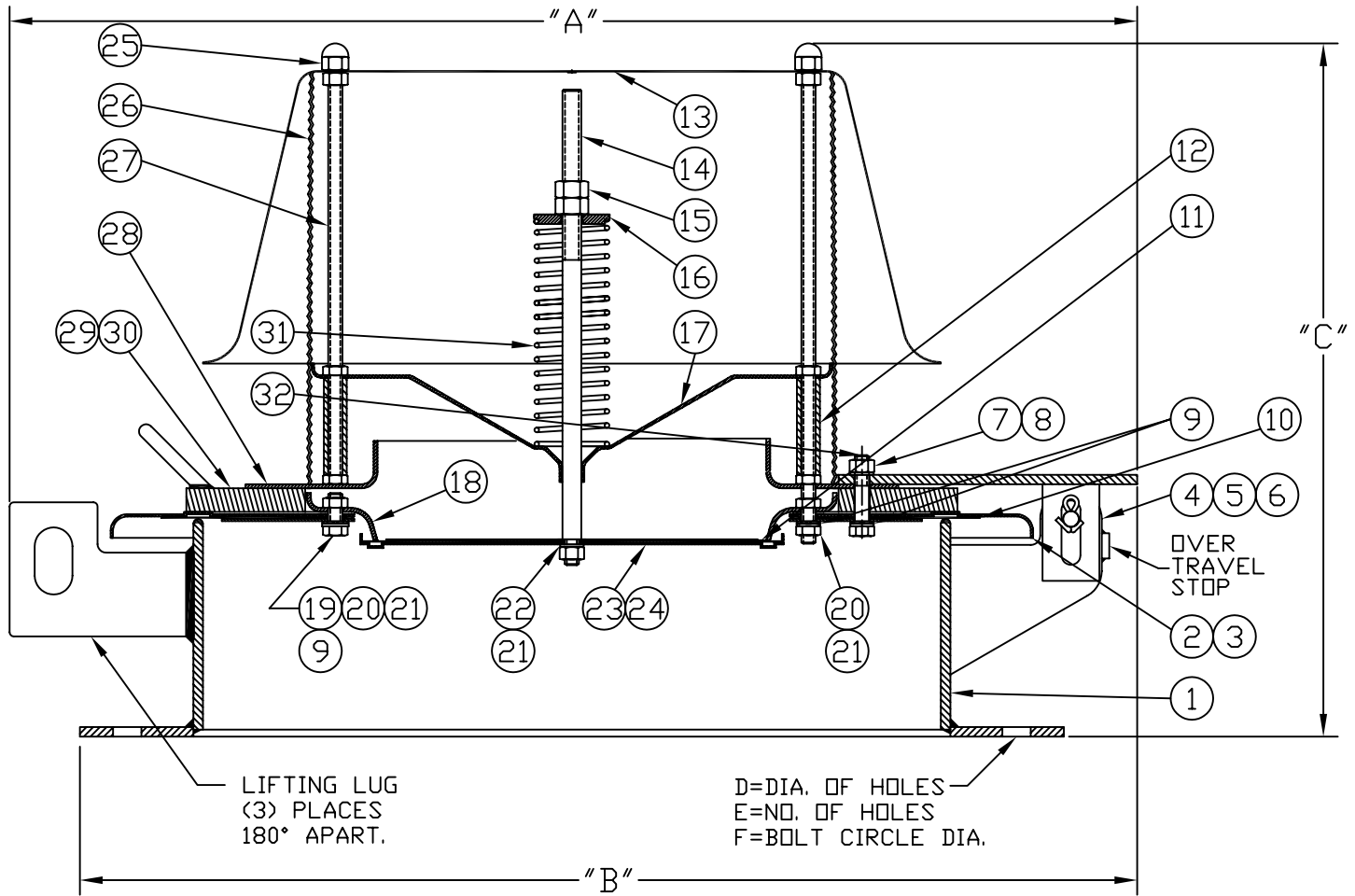


MODEL 2450A
EMERGENCY PRESSURE/VACUUM RELIEF VENT
STANDARD



SIZE	FLANGE DRILLING	A		B		C		D		E	F	
		In.	mm	In.	mm	In.	mm	In.	mm		In.	mm
16"	150# ANSI	26.50	673	23.50	597	18.50	470	1.125	29	16	21.25	540
20"	150# ANSI	30.50	775	28.75	730	18.50	470	1.25	32	20	25.00	635
	API 650	30.50	775	28.00	711	18.50	470	.75	19	16	23.50	597
24"	150# ANSI	34.50	876	33.25	845	18.63	473	1.375	35	20	29.50	749
	API 650	34.50	876	32.50	826	18.63	473	.75	19	20	27.50	699

- NOTE:
1. WEIGHT PLATE THICKNESS VARIES WITH SET PRESSURE.
2. "C" DIMENSION MINIMUM HEIGHT, HEIGHT VARIES WITH WEIGHT PLATE THICKNESS.

TAGS AND SPECIFICATIONS

THIS DRAWING EMBODIES A CONFIDENTIAL PROPRIETARY DESIGN ORIGINATED BY GROTH CORPORATION, AND ALL DESIGN, MANUFACTURING, REPRODUCTION, USE AND SALE RIGHTS, REGARDING THE SAME ARE EXPRESSLY RESERVED. IT IS SUBMITTED UNDER A CONFIDENTIAL RELATIONSHIP FOR A SPECIFIED PURPOSE, AND THE RECIPIENT AGREES BY ACCEPTING THIS DRAWING NOT TO SUPPLY OR DISCLOSE ANY INFORMATION REGARDING IT TO ANY UNAUTHORIZED PERSONS OR TO INCORPORATE IN OTHER PROJECTS ANY SPECIAL FEATURES PECULIAR TO THIS DESIGN. ALL PATENTS RIGHTS HERETO ARE EXPRESSLY RESERVED BY GROTH CORPORATION, 1202 HAHLO, HOUSTON, TEXAS 77020

REV.	DATE	BY	ECN NO.
A	06-16-00	MP	10077
B	08-23-01	MP	10276



GROTH CORPORATION
a Continental Disc Company

APPROVED BY:
DATE:

CHECKED BY:
DATE:

DWG. NO.: C-92088
DWN BY: GS

MODEL 2450A

BILL OF MATERIAL

ITEM	DESCRIPTION	STANDARD MATERIALS OF CONSTRUCTION		OPTIONAL FEATURES
		CARBON STL <input type="checkbox"/>	316 SS <input type="checkbox"/>	
1	BODY (1)	CS	316 SS	<input type="checkbox"/>
2	PALLET, PRESSURE	316 SS	316 SS	<input type="checkbox"/>
3	PLATE, RETAINER (PRESSURE)	316 SS	316 SS	<input type="checkbox"/>
4	ARM, HINGE	CS	SS	<input type="checkbox"/>
5	PIN, HINGE	SS	SS	<input type="checkbox"/>
6	PIN, COTTER	SS	SS	<input type="checkbox"/>
7	NUT, HEX	SS	SS	<input type="checkbox"/>
8	WASHER, LOCK	SS	SS	<input type="checkbox"/>
9	* WASHER	PTFE	PTFE	<input type="checkbox"/>
10	* DIAPHRAGM, PRESSURE (2) (3)	Teflon® FEP	Teflon® FEP	<input type="checkbox"/>
11	* DIAPHRAGM, VACUUM (2) (3)	Teflon® FEP	Teflon® FEP	<input type="checkbox"/>
12	SPACER	CS	SS	<input type="checkbox"/>
13	WEATHERHOOD	CS	SS	<input type="checkbox"/>
14	STEM, VACUUM	SS	SS	<input type="checkbox"/>
15	NUT, HEX	SS	SS	<input type="checkbox"/>
16	BUTTON, SPRING	SS	SS	<input type="checkbox"/>
17	GUIDE, STEM	SS	SS	<input type="checkbox"/>
18	SEAT, VACUUM	SS	SS	<input type="checkbox"/>
19	BOLT, HEX	SS	SS	<input type="checkbox"/>
20	WASHER, FLAT	SS	SS	<input type="checkbox"/>
21	NUT, HEX	SS	SS	<input type="checkbox"/>
22	WASHER, LOCK	SS	SS	<input type="checkbox"/>
23	PALLET, VACUUM	316 SS	316 SS	<input type="checkbox"/>
24	PLATE, RETAINER (VACUUM)	316 SS	316 SS	<input type="checkbox"/>
25	NUT, CROWN	SS	SS	<input type="checkbox"/>
26	SCREEN	SS	SS	<input type="checkbox"/>
27	POST, WEATHERHOOD	SS	SS	<input type="checkbox"/>
28	** DAM, WATER	CS	SS	<input type="checkbox"/>
29	** PLATE, WEIGHT	CS	CS	<input type="checkbox"/>
30	** HANDLE	CS	CS	<input type="checkbox"/>
31	SPRING	CS	SS	<input type="checkbox"/>
32	BOLT, HEX (4)	SS	SS	<input type="checkbox"/>

* SPARE PARTS

** IF REQUIRED - DETERMINED BY SETTING.

(1) SEAT MATERIAL ON CARBON STEEL BASE IS 316 SS WELD OVERLAY.

(2) ELASTOMERS ALSO AVAILABLE IN AFLAS, BUNA, EPDM, & VITON.

(3) Teflon® is a registered trademark of E.I. du Pont de Nemours and Co. used under license.

(4) HEX BOLT LENGTH VARIES WITH SETTING.

DWG. NUMBER:
BOM NUMBER:

C-92088
92088BOM.XLS

